


I Monasteri 10x10 - 4"x4"    La Loggia 15x15 - 6"x6"    I Vetri Antichi 20x20 - 8"x8"    STUCCATI 10x20 - 4"x8"

Sistina 25x25 - 9,75"x9,75"    I Monasteri 30x30 - 15x30/12"x12" - 6"x12"





Con "Collezioni d'autore" continuiamo a scavare nella storia per creare antichi colori, antiche forme, vecchi disegni da riprovarsi e creare nuove atmosfere, nuovi angoli suggestivi per nuove emozioni da vivere con la storia del Rinascimento.

"Collezioni d'autore" was created to delve into the history ancient colours, forms, old designs to reintroduce to you. In this way we offer you the possibility to create new atmospheres, new attracting corners and new emotion to live in the life of Renaissance.

Avec "Collezioni d'autore" nous recherchons dans l'histoire ancien couleurs, formes, vieux dessins qui Vous donneront nouvelles atmosphères, nouveaux et suggestifs angles. Vous vivez nouvelles émotions dans l'histoire de la Renaissance.

Durch den "Collezioni d'autore" wird die Suche nach antiken Farben und Formen sowie nach alten Bildern fortgesetzt, welche Ihrem Wohnraum den Geist und die Stimmung der Renaissancezeit übermitteln.



## I Monasteri 10x10 - 4"x4"





## I Monasteri 10x10 - 4"x4"

i colori  
colours - couleurs  
farben



*Miele*



*Blu notte*



*Ruggine*



*Bianco*



*Smeraldo*



*Verde ramina*



## I Monasteri 10x10 - 4"x4"

i decori  
decors - décors  
dekore



*T101*



*T102*



*T103*



*T104*



*T105*



## La Loggia 15x15 - 6"x6"





## La Loggia 15x15 - 6"x6"

i colori  
colours - couleurs  
farben



*Miele*



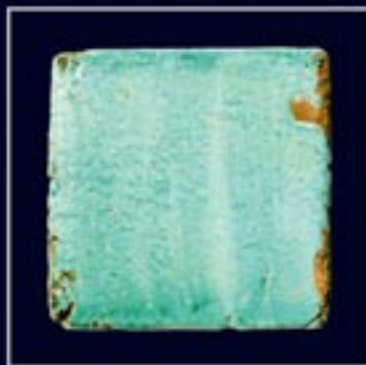
*Blu notte*



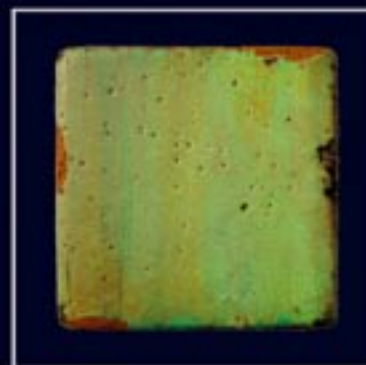
*Ruggine*



*Bianco*



*Smeraldo*



*Verde ramina*

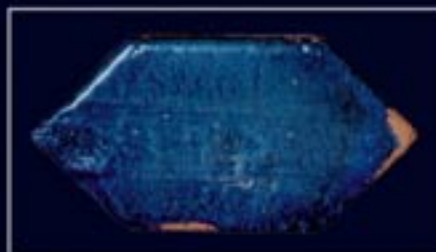


## La Loggia losanghe 15x30 - 6"x12"

i colori  
colours - couleurs  
farben



*Miele*



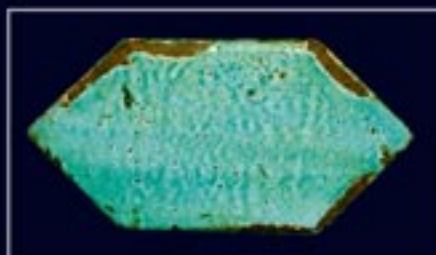
*Blu notte*



*Ruggine*



*Bianco*



*Smeraldo*



*Verde ramina*



## La Loggia

composizioni a cassettone  
caisson composition - composition à caissons  
kassetttenkomposition



*Miele*

*Blu notte*

*Ruggine*

*Bianco*

*Smeraldo*

*Verde ramina*





La Certosa tozzetto 15x15 - 6"x6"  
losanga 15x30 - 6"x12"

i decori  
decors - décors  
dekore

Tozzetto decorato

1	2	3	4
5	6	7	8
9	10	11	12



Losanga decorata





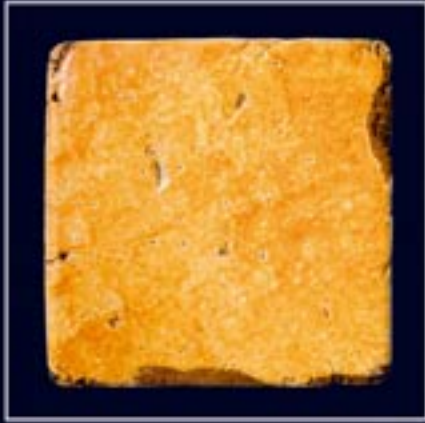
## I Vetri Antichi 20x20 - 8" x 8"



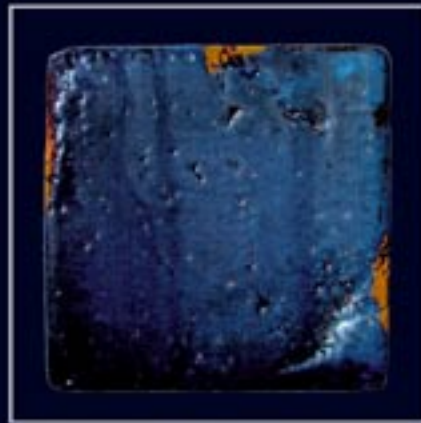


I Vetri Antichi 20x20 - 8"x8"

i colori  
colours - couleurs  
farben



*Miele*



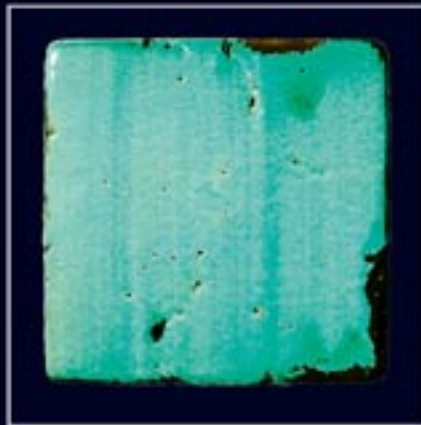
*Blu notte*



*Ruggine*



*Bianco*



*Smeraldo*



*Verde ramina*



I Vetri Antichi 20x20 - 8"x8"

i decori  
decors - décors  
dekore



*Sole blu*



*Caterina*



*Dama*



*Scudo*



*Rosa verde*



*Rosa blu*

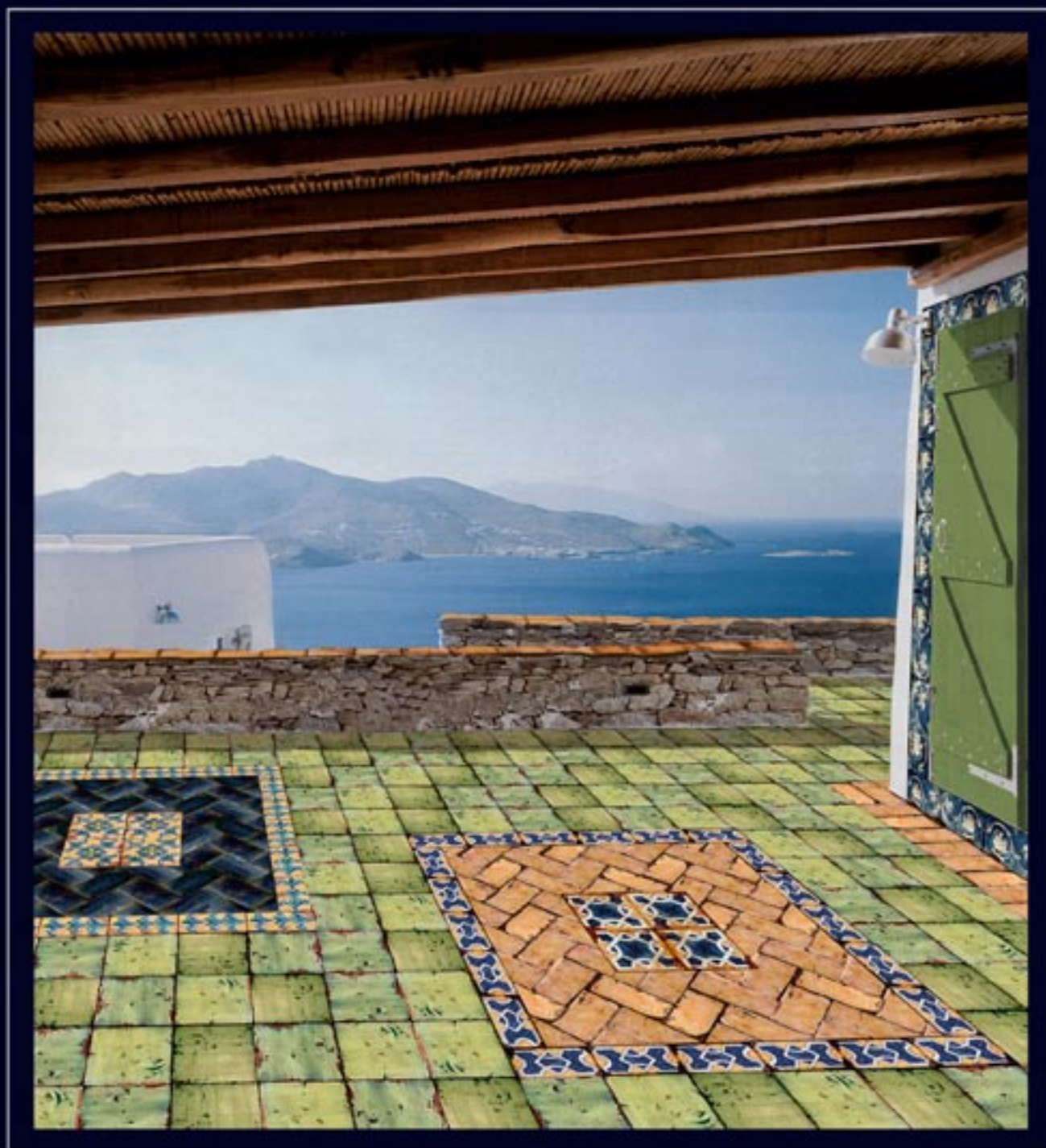


*Fiore verde*





*3 Monasteri 30x30 - 15x30/12"x12" - 6"x12"*





*D* *Monasteri 30x30 - 12"x12"*

i colori  
i colori - i colori  
i colori - i colori



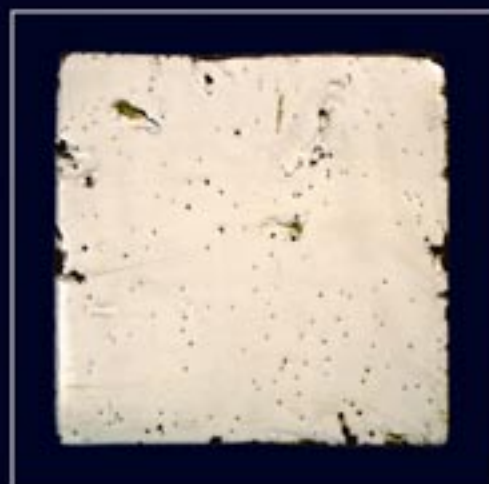
*Miele*



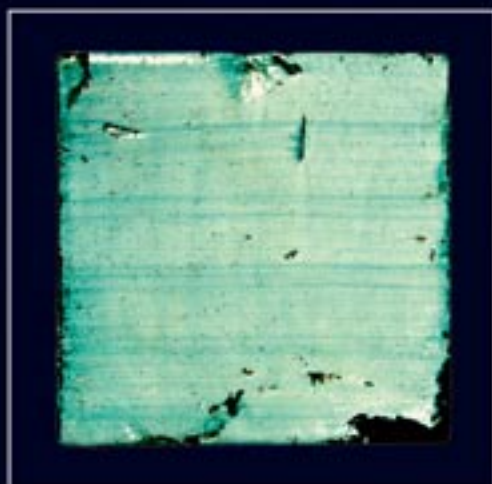
*Blu notte*



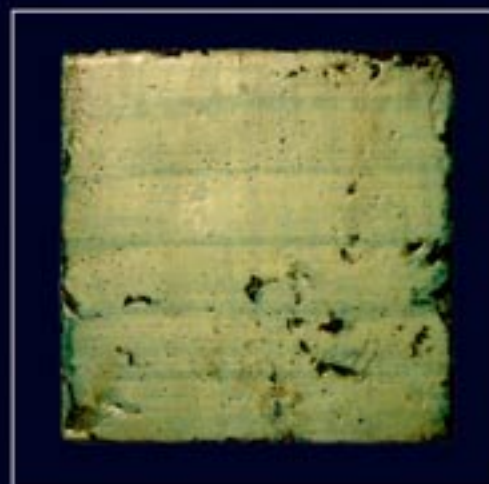
*Ruggine*



*Bianco*



*Smeraldo*



*Verde ramina*

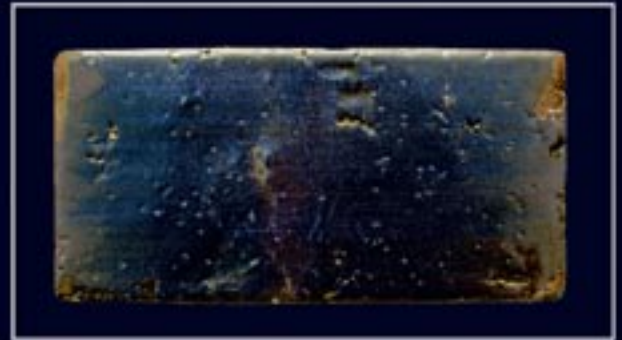


*9 Monasteri 15x30 - 6"x12"*

i colori  
i colori - i colori  
i colori - i colori



*Miele*



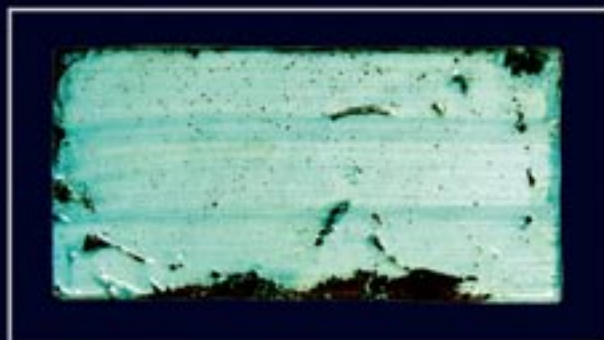
*Blu notte*



*Ruggine*



*Bianco*



*Smeraldo*



*Verde ramina*





T301



T 302



T303



T151



T152



T 153



T 304



T 305



T 306



T 154



T 155



T 156



T 307



T 157



T 17 tozzetto 15x15 - 6"x6"





**Sistina**      25x25 - 9,75"x 9,75"



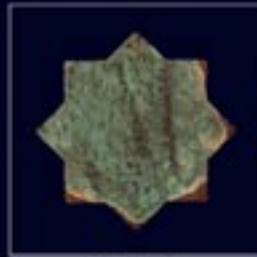


SISTINA 25X25 - 9.75"X9.75"

i colori  
colours - couleurs  
farben



*Stella Bianca*



*Stella Verde*



*Stella Blu*



*Intarsio Bianco*



*Intarsio Verde*



*Intarsio Blu*

## Decori - Decors - Dècors - Dekore



*Stella Federico*



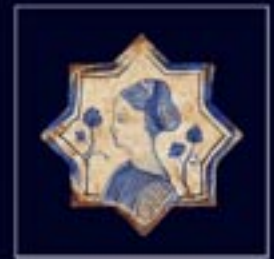
*Intarsio Biancospino*



*Stella Altavilla*



*Intarsio Cornamusa*



*Stella Costanza*



*Intarsio Rami*



*1 - Stella Religiosa*



*2 - Intarsio Decoro 3*



*3 - Stella Regina*



*4 - Intarsio Decoro 1*



*5 - Stella Attore*



*6 - Intarsio Decoro 2*



*12 - Stella Falconiere*



*11 - Intarsio Filo D'oro*



*10 - Stella Classico*



*9 - Intarsio Decoro 4*



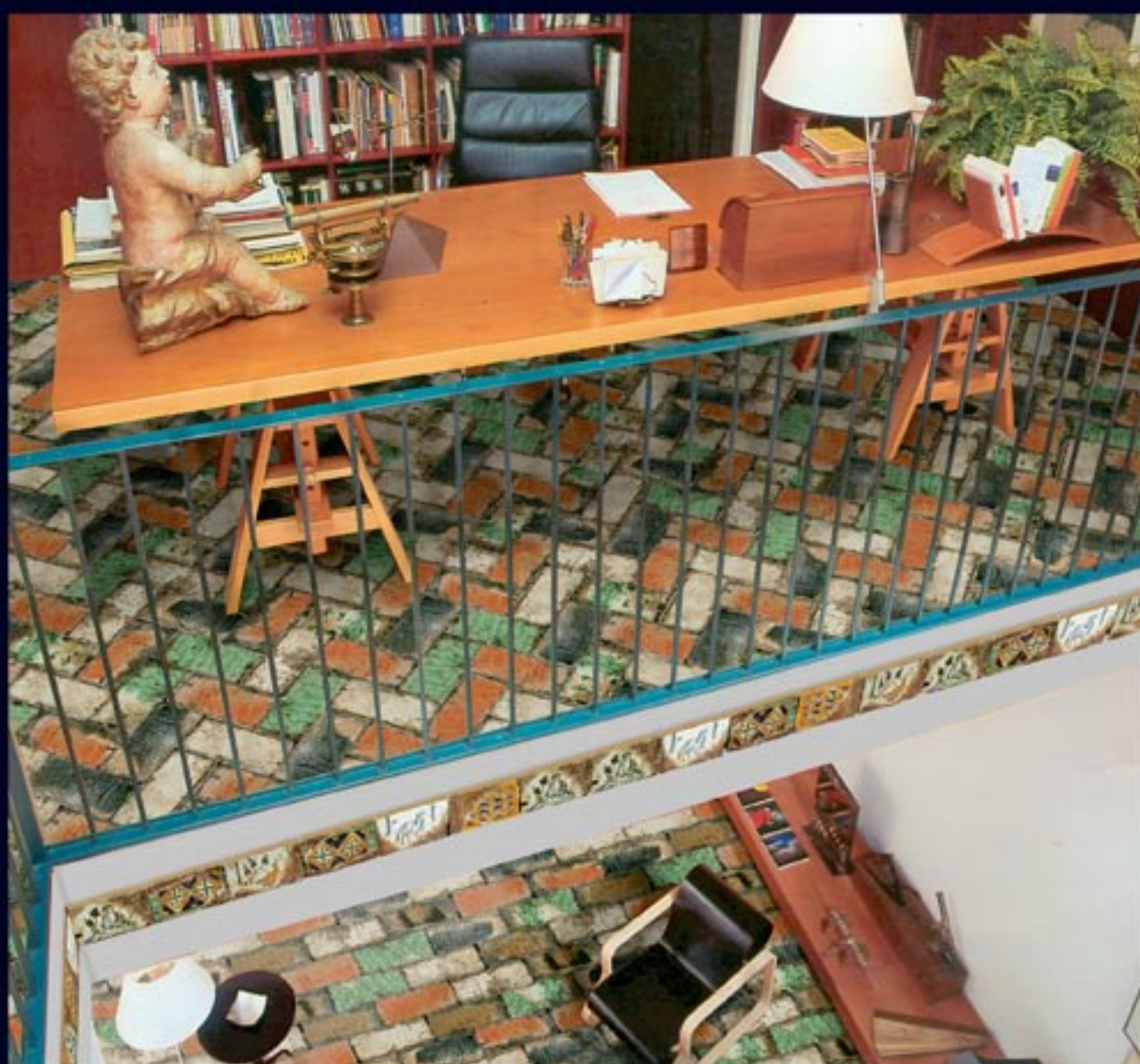
*8 - Stella Angelo*



*7 - Intarsio Ricamo*



STUCCHI 10x20 - 4"x8"





## Ali stucchi 10x20 - 4"x8"

i colori  
colours - couleurs  
farben



*Bianco*



*Blu*



*Rosso*



*Terra bruciata*



*Verde*



## Ali stucchi 10x20 - 4"x8"

i decori  
decors - décors  
dekore



*Castello*



*Cavallo*



*Volpe*



*Doppio quadrato*



*Prospettiva*



30x30 - 12"x12" Bianco  
 30x30 - 12"x12" Blu notte  
 30x30 - 12"x12" T307  
 15x30 - 6"x12" T157  
 15x15 - 6"x6" T17



15x30 - 6"x12" Ruggine  
 15x15 - 6"x6" Miele  
 15x15 - 6"x6" Verde ramina  
 15x15 - 6"x6" Decori



30x30 - 12"x12" Verde ramina  
 15x30 - 6"x12" Miele  
 15x30 - 6"x12" T152





30x30 - 12"x12" Blu notte  
 15x30 - 6"x12" Bianco  
 15x30 - 6"x12" Smeraldo



30x30 - 12"x12" Bianco  
 30x30 - 12"x12" Verde ramina  
 15x30 - 6"x12" Bianco  
 15x15 - 6"x12" Bianco  
 15x15 - 6"x12" Tozzetto decorato  
 10x10 - 4"x4" Bianco  
 10x10 - 4"x4" Smeraldo  
 10x10 - 4"x4" Miele



30x30 - 12"x12" Bianco  
 30x30 - 12"x12" Ruggine  
 30x30 - 12"x12" Miele  
 30x30 - 12"x12" Blu notte  
 30x30 - 12"x12" Verde ramina  
 30x30 - 12"x12" Smeraldo  
 30x30 - 12"x12" T302  
 30x30 - 12"x12" T306  
 30x30 - 12"x12" T303  
 15x30 - 6"x12" T151



## I Monasteri 10x10 - 4"x4"



*Il materiale è prodotto e decorato completamente a mano*

*The tiles are entirely hand-made and hand-decorated*

*Les carreaux sont entièrement faits et décorés à a la main*

*Die Fliesen sind volling handgemacht und-dekoriert*

*Il materiale è prodotto e decorato completamente a mano*



## ECO CERAMICA

Via Don P. Borghi, 5 - 42010 S. Antonino di Casalgrande (RE) - Italy

Tel. +39 0536/991701 - Fax +39 0536/990164

web site: [www.ecoceramica.com](http://www.ecoceramica.com) e-mail: [ecoceramica@ecoceramica.com](mailto:ecoceramica@ecoceramica.com)